



# S o m m a i r e

## Lecture de notes

- Apprentissage de la clé de sol et clé de fa - - - - 8
- Ecriture des notes de la clé de sol et clé de fa - - - - 18

## Rythmes

- Schéma récapitulatif - - - - 25
- Lecture de rythmes - - - - 26
- Relevés de rythmes - - - - 42

## Chant

- Intonation - - - - 46
- Chant - - - - 50
- Noël - - - - 56

## Théorie

- Leçon 1 – La partition - - - - 60
- Leçon 2 – L'ordre des notes - - - - 61
- Leçon 3 – La portée - - - - 62
- Leçon 4 – Les rythmes - - - - 63
- Leçon 5 – Les doubles-croches - - - - 64
- Leçon 6 – Les croches - - - - 65
- Leçon 7 – La croche pointée double-croche - - - - 66
- Leçon 8 – Le chiffrage - - - - 67
- Leçon 9 – Les nuances - - - - 69

Tests
-------

• Test oral n°1	-	-	-	-	-	-	-	-	72
• Test oral n°2	-	-	-	-	-	-	-	-	73
• Test oral n°3	-	-	-	-	-	-	-	-	74
• Test oral n°4	-	-	-	-	-	-	-	-	75
• Test oral n°5	-	-	-	-	-	-	-	-	76
• Test oral n°6	-	-	-	-	-	-	-	-	77
• Test oral n°7	-	-	-	-	-	-	-	-	78
• Test oral n°8	-	-	-	-	-	-	-	-	79

APPRENTISSAGE DE LA CLE DE SOL ET CLE DE FA

1

do sol

2

mi

3

do fa

4

do

5

mi

6

7

Musical notation for measure 7, consisting of a grand staff with treble and bass clefs. The treble staff contains a sequence of notes: G4, A4, B4, C5, B4, A4, G4. The bass staff contains a sequence of notes: E3, D3, C3, B2, A2, G2, F2.

8

Musical notation for measure 8, consisting of a grand staff with treble and bass clefs. The treble staff contains a sequence of notes: G4, A4, B4, C5, B4, A4, G4, F4, E4, D4. The first note G4 is enclosed in a box with the label "ré" below it. The bass staff contains a sequence of notes: E3, D3, C3, B2, A2, G2, F2, E2, D2, C2.

9

Musical notation for measure 9, consisting of a grand staff with treble and bass clefs. The treble staff contains a sequence of notes: G4, A4, B4, C5, B4, A4, G4. The bass staff contains a sequence of notes: E3, D3, C3, B2, A2, G2, F2.

10

Musical notation for measure 10, consisting of a grand staff with treble and bass clefs. The treble staff contains a sequence of notes: G4, A4, B4, C5, B4, A4, G4. The bass staff contains a sequence of notes: E3, D3, C3, B2, A2, G2, F2.

11

Musical notation for measure 11, consisting of a grand staff with treble and bass clefs. The treble staff contains a sequence of notes: G4, A4, B4, C5, B4, A4, G4, with a slur over the first six notes and a fermata over the last note. The bass staff contains a sequence of notes: E3, D3, C3, B2, A2, G2, F2, with a slur over the last three notes. The measure is marked with *a* at the beginning, *b* above the bass staff, and *c* at the end.

12

Musical notation for measure 12, consisting of a grand staff with treble and bass clefs. The treble staff contains a sequence of notes: G4, A4, B4, C5, B4, A4, G4, with a slur over the first six notes and a fermata over the last note. The bass staff contains a sequence of notes: E3, D3, C3, B2, A2, G2, F2, with a slur over the last two notes. The measure is marked with *a* at the beginning and *b* above the bass staff.

49

Musical notation for measure 49, featuring a treble clef staff with a sequence of eighth notes and a single quarter note with an accent mark.

50

Musical notation for measure 50, featuring a treble clef staff with a box around the first note labeled "ré" and a sequence of half notes.

51

Musical notation for measure 51, featuring a treble clef staff with four groups of notes labeled "a", "b", "c", and "d" connected by slurs.

52

Musical notation for measure 52, featuring a bass clef staff with three groups of notes labeled "a", "b", and "c" connected by slurs.

53

*A apprendre par coeur*

Musical notation for measure 53, featuring a treble clef staff with a sequence of eighth notes.

54

*A apprendre par coeur*

Musical notation for measure 54, featuring a treble clef staff with a sequence of eighth notes.

EXERCICE

Ecris les notes ou le nom des notes sur les portées suivantes.

1

do do sol sol

fa do

3

mi mi sol do

fa fa do do

5

fa fa do do

fa fa do

7

ré ré mi sol ré

ré ré mi sol

9

ré ré mi sol

ré ré mi sol

## ♪ - Deux croches

45

1 2 3 4 noire 1 3 noire deux croches noire

46

2/4

47

48

49

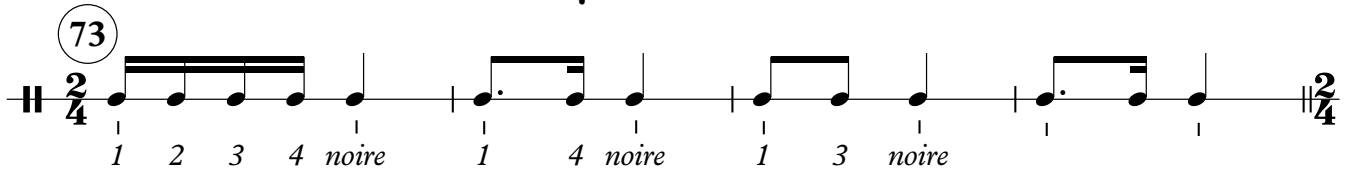
50 **Andante doloroso** (♩ = 50) *E. C.*

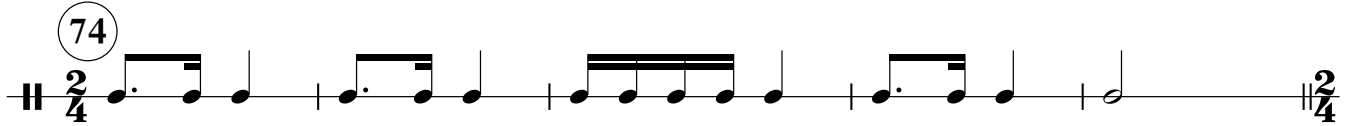
5

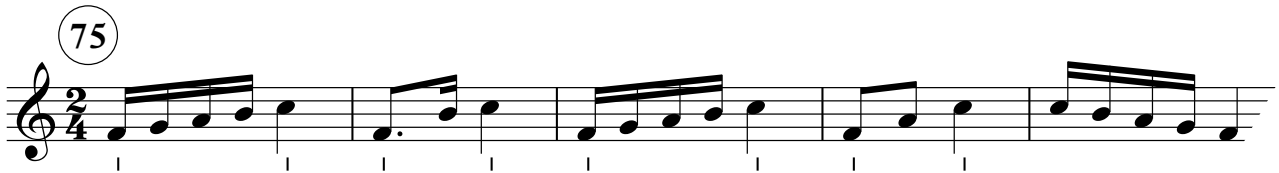
9

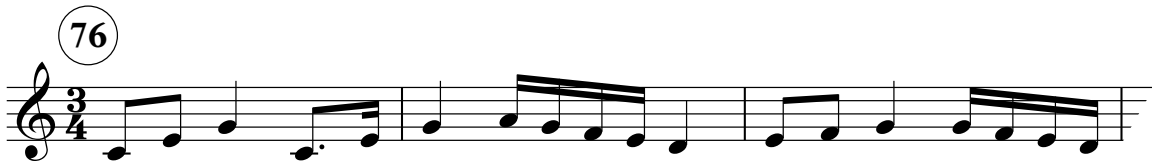
13

 - Croche pointée double croche

73 

74 

75 

76 

77 

78 **Largo**  


4  


7  


10  


# Intonation

## Sur deux notes

1 2 3 4 5

This exercise consists of five measures, each containing a pair of notes (a half note and a quarter note) with a slur over them. The notes are: G4 (half), A4 (quarter) in measure 1; A4 (half), B4 (quarter) in measure 2; B4 (half), C5 (quarter) in measure 3; C5 (half), D5 (quarter) in measure 4; and D5 (half), E5 (quarter) in measure 5. The staff is a single treble clef line.

## Sur trois notes

6 7 8

This exercise consists of three measures, each containing a triplet of notes with a slur over them. The notes are: G4, A4, B4 in measure 6; A4, B4, C5 in measure 7; and B4, C5, D5 in measure 8. The staff is a single treble clef line.

9 10 11

This exercise consists of three measures, each containing a triplet of notes with a slur over them. The notes are: A4, B4, C5 in measure 9; B4, C5, D5 in measure 10; and C5, D5, E5 in measure 11. The staff is a single treble clef line.

12 13 14

This exercise consists of three measures, each containing a triplet of notes with a slur over them. The notes are: D5, E5, F5 in measure 12; E5, F5, G5 in measure 13; and F5, G5, A5 in measure 14. The staff is a single treble clef line.

## Sur quatre notes

15 16

This exercise consists of two measures, each containing a group of four notes with a slur over them. The notes are: G4, A4, B4, C5 in measure 15; and A4, B4, C5, D5 in measure 16. The staff is a single treble clef line.

17 18

This exercise consists of two measures, each containing a group of four notes with a slur over them. The notes are: B4, C5, D5, E5 in measure 17; and C5, D5, E5, F5 in measure 18. The staff is a single treble clef line.

20 21

This exercise consists of two measures, each containing a group of four notes with a slur over them. The notes are: D5, E5, F5, G5 in measure 20; and E5, F5, G5, A5 in measure 21. The staff is a single treble clef line.

23 24

This exercise consists of two measures, each containing a group of four notes with a slur over them. The notes are: F5, G5, A5, B5 in measure 23; and G5, A5, B5, C6 in measure 24. The staff is a single treble clef line.

9 C F G C

qui grat - tent le pied et le bout du nez.

*Les pendules*

17

Les pen - du - les font tic tac tic tac les pe - ti - tes pen - du - let - tes

4

tic tac tic tac tic tac tic tac mais les mon - tres vont plus

6

ti - que ta - que ti - que ta - que ti - que ta - que

*Laine*

18

Ma - man fais - moi un bon - net de lai -

4

com - me le co - ton, com

*Joyeux an*

19

Joy - eux an - ni - ver - sai

5

an - ni - ver -



# Noël

## Noël blanc



Noël blanc (pour 100% du copyright)  
Musique et paroles : BERLIN, Irving  
Adaptateur : BLANCHE, Francis  
© 1942 Universal Music Publishir  
Berlin Irving Music C

C Dm G F

Oh! Quand j'en-tends chan - ter No-ël J'ai-me re - voir mes jo'

7 C C<sup>7</sup> F Fm

fant Le sa - pin scin - ti-llant, la nei - ge d'ar-ger

14 Dm G C F

mon beau rê - ve blanc Oh! Quand j'en-tends

21 F C

L'heure où le bon viei-llard des- cend Je

27 F Fm C/G G

man Et je songe à d'aut-r'

## Il est né l

G

Il est né le di -

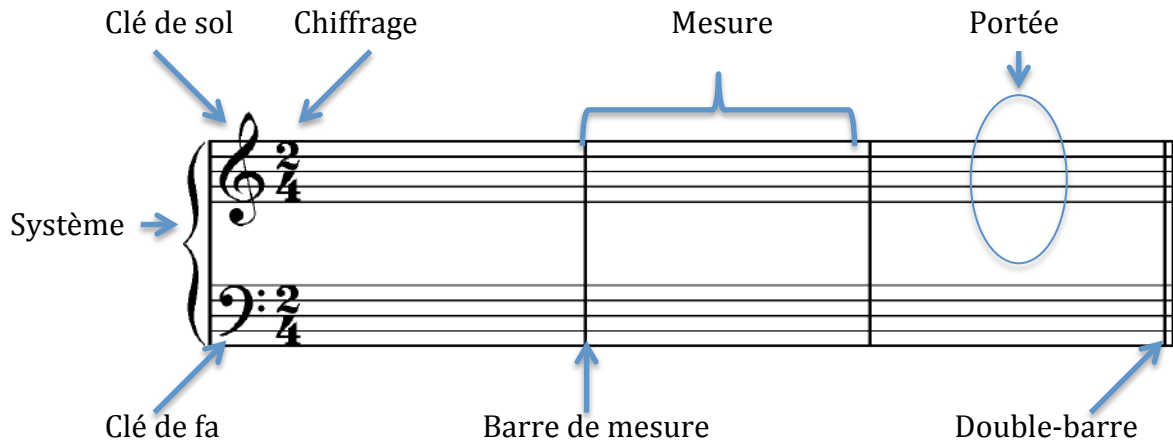
7 D

nez mu - set

12

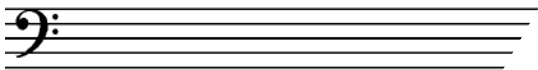
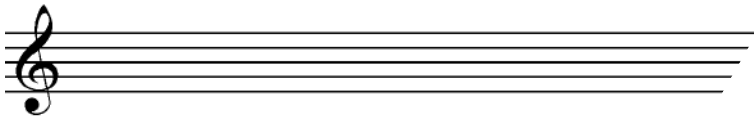
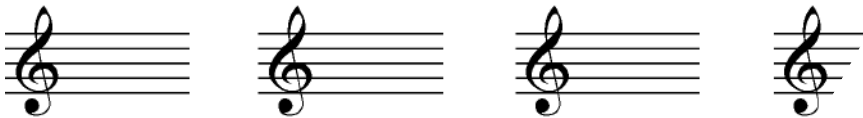
fant,

# Leçon 1 - La partition



## EXERCICE

Écris les clés de sol et clé de fa à partir du modèle ci-dessous



## Leçon 8 - Le chiffrage

Le chiffrage indique le nombre de **pulsations** que contient une mesure.



Il y a **deux** pulsations par mesure.



Il y a **trois** pulsations par mesure.



Il y a **quatre** par mesure.

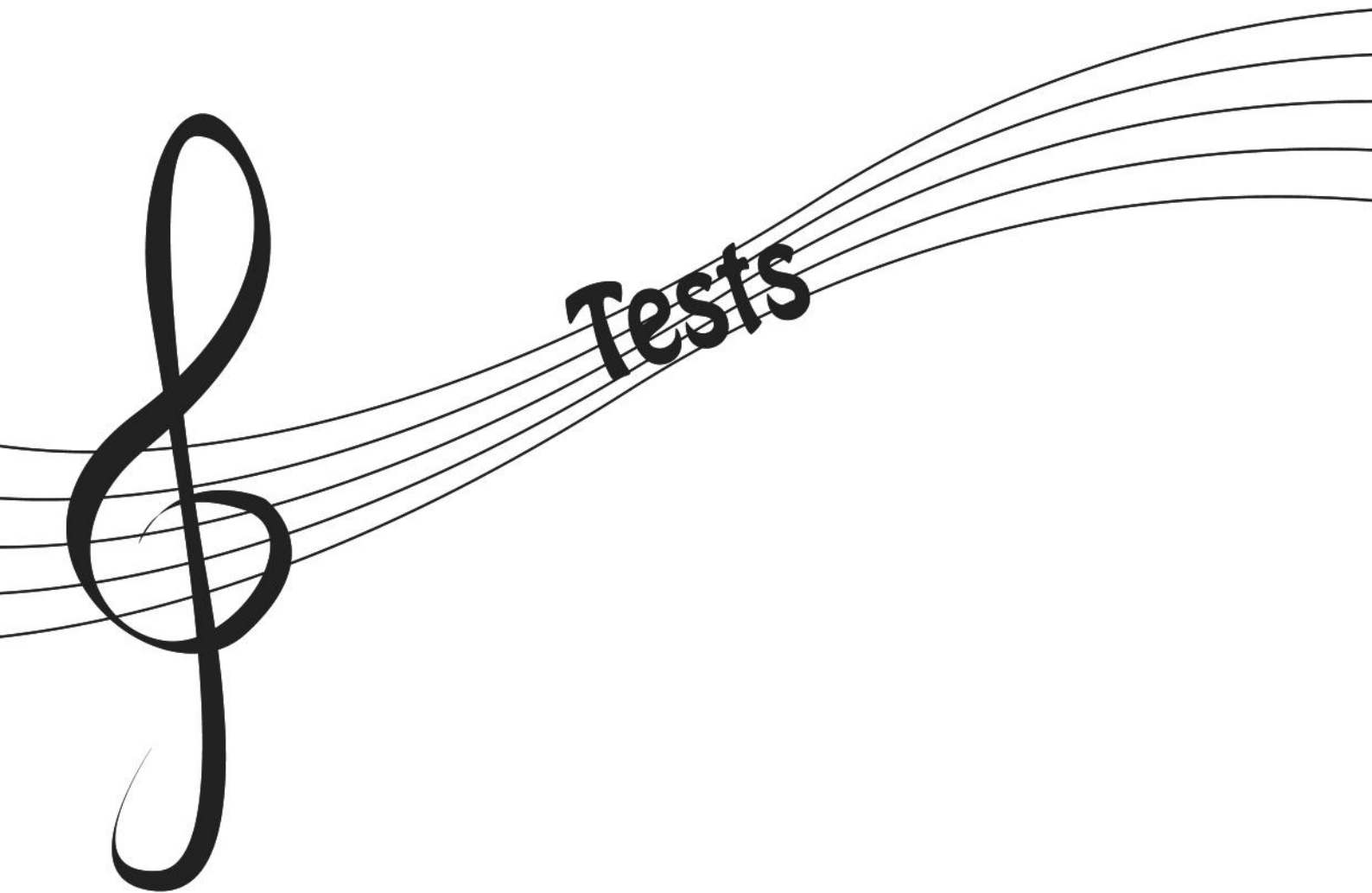
ou



### EXERCICE

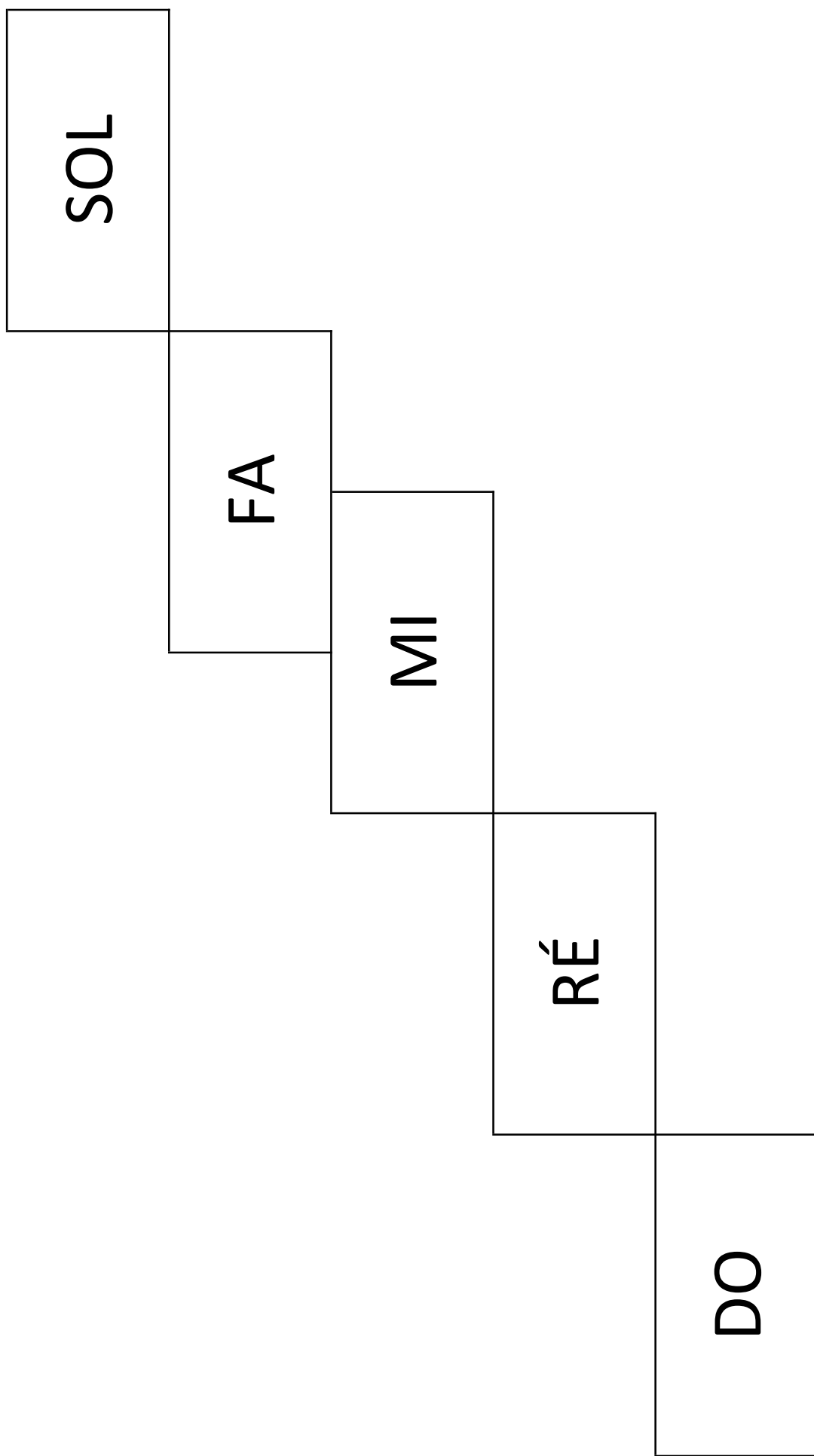
Mets les pulsations et complète le chiffrage





**Tests**





PLATEAU DE JEU - DO À SOL

## REMERCIEMENTS

À Anne-Françoise FRITSCH, Marielle FOVET et Joséphine FRITSCH pour leur aide à la réalisation de ce livre.

À Hélène VERMAUT pour les illustrations.

À Antonio MARECO pour la couverture et les pages de présentation de chaque partie.

À Planète partitions pour leur contribution à l'édition de ce livre.

Tommy DESCAMPS et Marie-Pierre PICOT-JONCRET.



Antonio MARECO

[helene.vermaut@gmail.com](mailto:helene.vermaut@gmail.com)  
[www.helenevermaut.com](http://www.helenevermaut.com)

[antonio.mareco@orange.fr](mailto:antonio.mareco@orange.fr)



Musicale Ecriture  
1, avenue Wilson  
02400 Château-Thierry  
[www.musicale-ecriture.com](http://www.musicale-ecriture.com)

Capte Note Editions – Planète Partitions  
[www.planetepartitions.com](http://www.planetepartitions.com)



Editions Tommy DESCAMPS